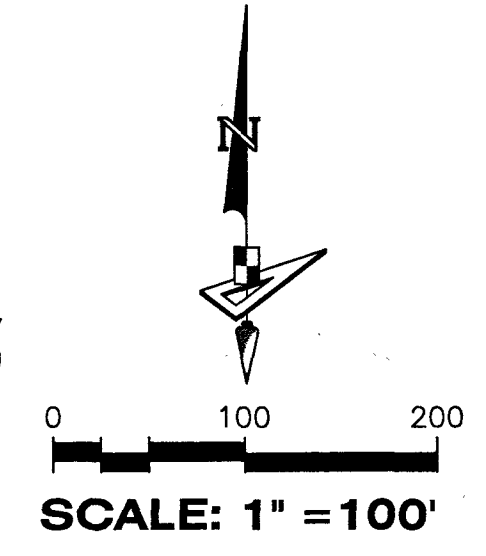


POD PC-3

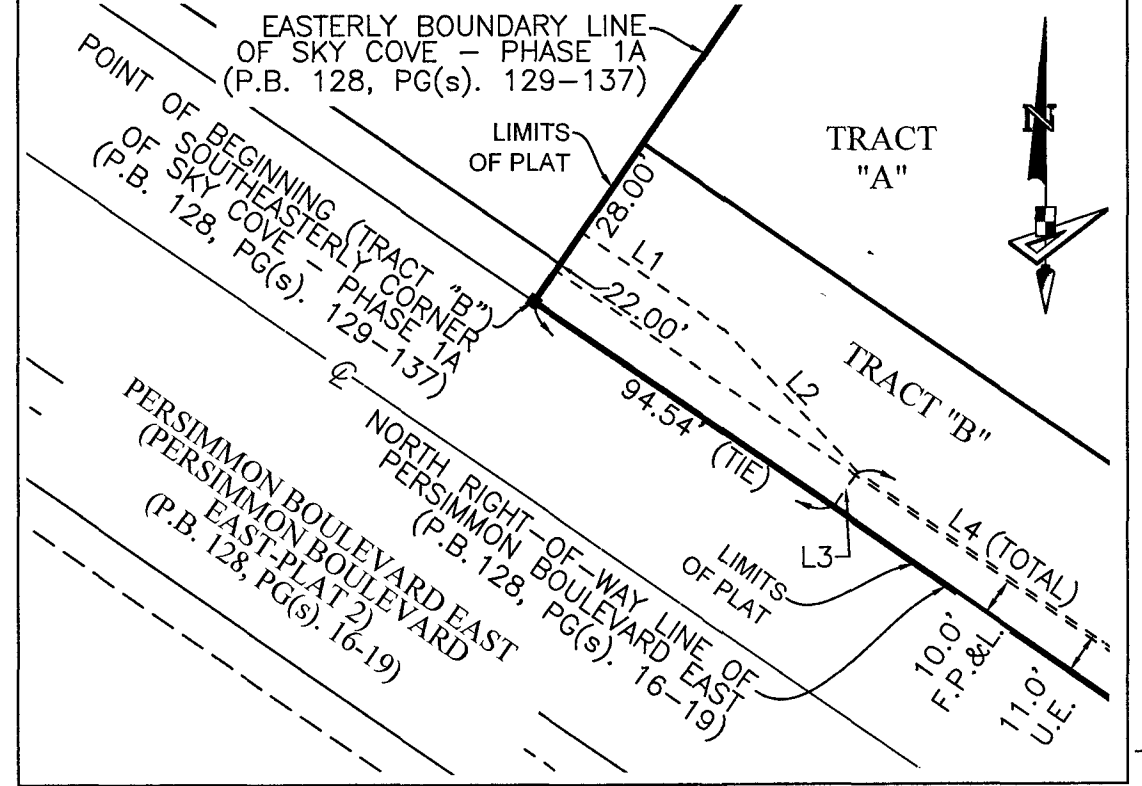
BEING, IN PART, A REPLAT OF A PORTION OF OPEN SPACE TRACT #2, PERSIMMON BOULEVARD EAST - PLAT 2, PLAT BOOK 128, PAGES 16 THROUGH 19, INCLUSIVE, PUBLIC RECORDS OF PALM BEACH COUNTY, FLORIDA, AND LYING IN PORTIONS OF SECTIONS 1 AND 12, TOWNSHIP 43 SOUTH, RANGE 40 EAST, AND SECTIONS 6 AND 7 TOWNSHIP 43 SOUTH, RANGE 41 EAST, CITY OF WESTLAKE, PALM BEACH COUNTY, FLORIDA

POINT OF COMMENCEMENT (TRACT "A") - NORTHEAST CORNER OF SECTION 1, TOWNSHIP 43 S., RANGE 40 E.
 SET 3.5" IRON PIPE "PUBLIC LAND SURVEY CORNER-TALLAHASSEE MERIDIAN" BRASS DISK "10' EAST" SET IN CONCRETE / FOUND 10' EAST ON SECTION LINE N: 894626.7147 / E: 886137.1629
 NAD83 (2007 ADJUSTMENT)
 CERTIFIED CORNER RECORD #107597

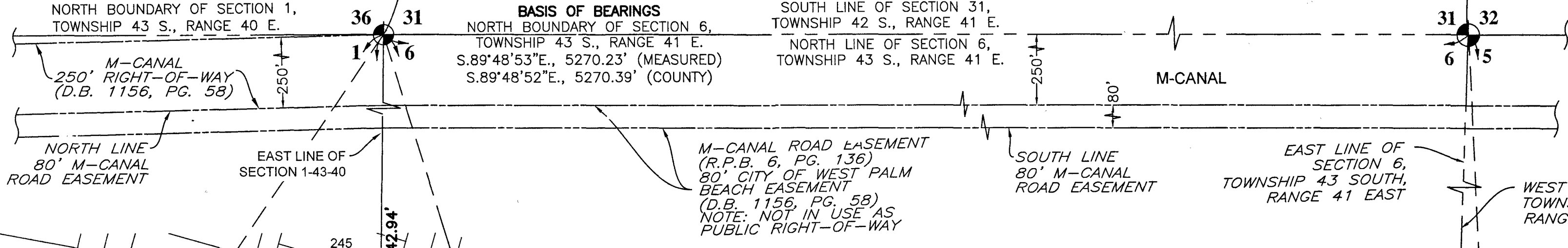
NORTHEAST CORNER SECTION 6-43-41
 FOUND BRASS DISK IN CONCRETE "P.B.C."
 N: 884608.8818 E: 891407.8638
 NAD83 (2007 ADJUSTMENT)
 CERTIFIED CORNER RECORD #107591



DETAIL "A" (SCALE: 1"=50')



| NO. | BEARING | LENGTH |
|-----|---------------|---------|
| L1 | S 55°21'38" E | 44.91' |
| L2 | S 42°51'56" E | 50.84' |
| L3 | S 34°38'22" W | 11.00' |
| L4 | S 55°21'38" E | 955.86' |



BASIS OF BEARINGS
 NORTH BOUNDARY OF SECTION 6, TOWNSHIP 43 S., RANGE 41 E.
 S.89°48'53"E., 5270.23' (MEASURED)
 S.89°48'52"E., 5270.39' (COUNTY)

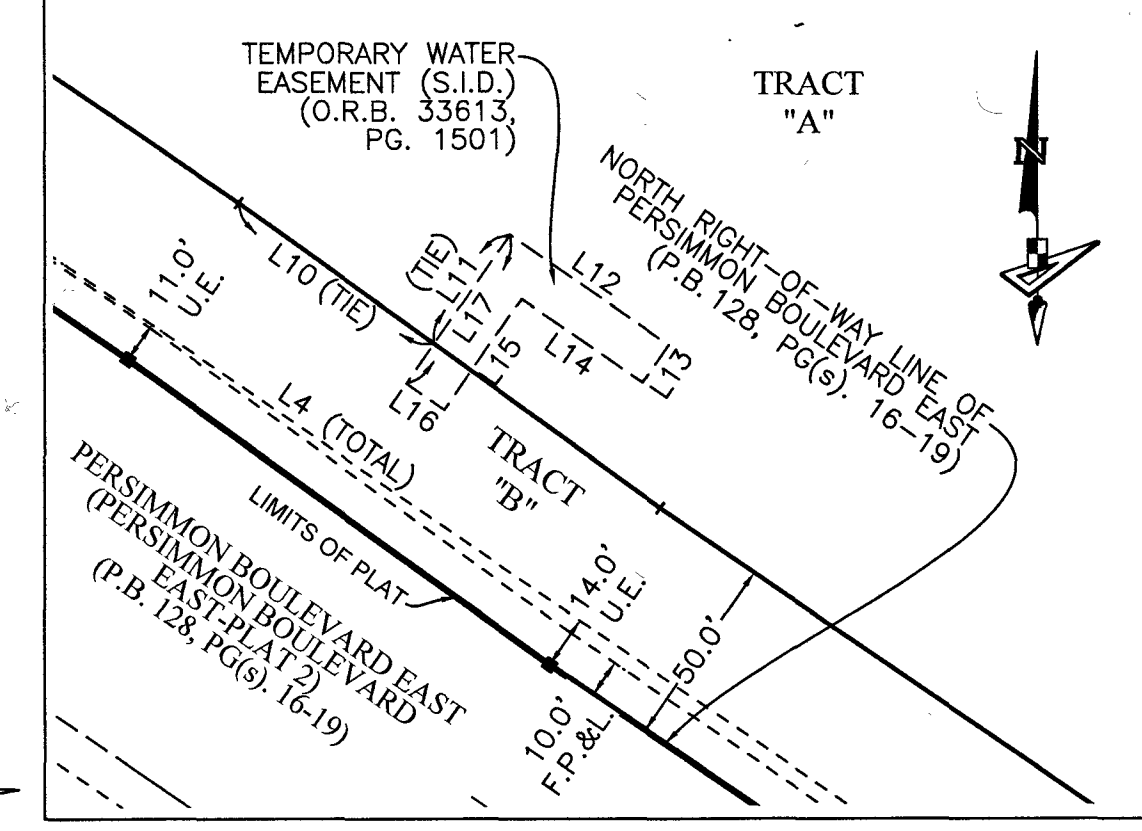
COORDINATES SHOWN HEREON ARE FLORIDA STATE PLANE GRID DATUM = NAD83 2007 ADJUSTMENT ZONE = FLORIDA EAST LINEAR UNITS = US SURVEY FEET COORDINATE SYSTEM = 1983 STATE PLANE PROJECTION = TRANSVERSE MERCATOR ALL DISTANCES ARE GROUND SCALE FACTOR = 1.0000 GROUND DISTANCE X SCALE FACTOR = GRID DISTANCE PLAT ROTATION = GRID BEARING NO ROTATION ALL TIES TO SECTION CORNERS AND QUARTER CORNERS ARE GENERATED FROM MEASURED VALUES

BASIS OF BEARINGS
 BEARINGS SHOWN HEREON ARE BASED ON THE NORTH BOUNDARY OF SECTION 6, TOWNSHIP 43 SOUTH, RANGE 41 EAST, HAVING A GRID BEARING OF S.89°48'53"E. (MEASURED). BEARINGS SHOWN HEREON, REFER TO THE STATE PLANE COORDINATE SYSTEM, NORTH AMERICA DATUM OF 1983 (NAD 83 - 07) FOR THE EAST ZONE OF FLORIDA. SAID BASIS OF BEARING IS THE SAME IN THE NORTH AMERICAN DATUM OF 1983 (NAD 83 - 90).

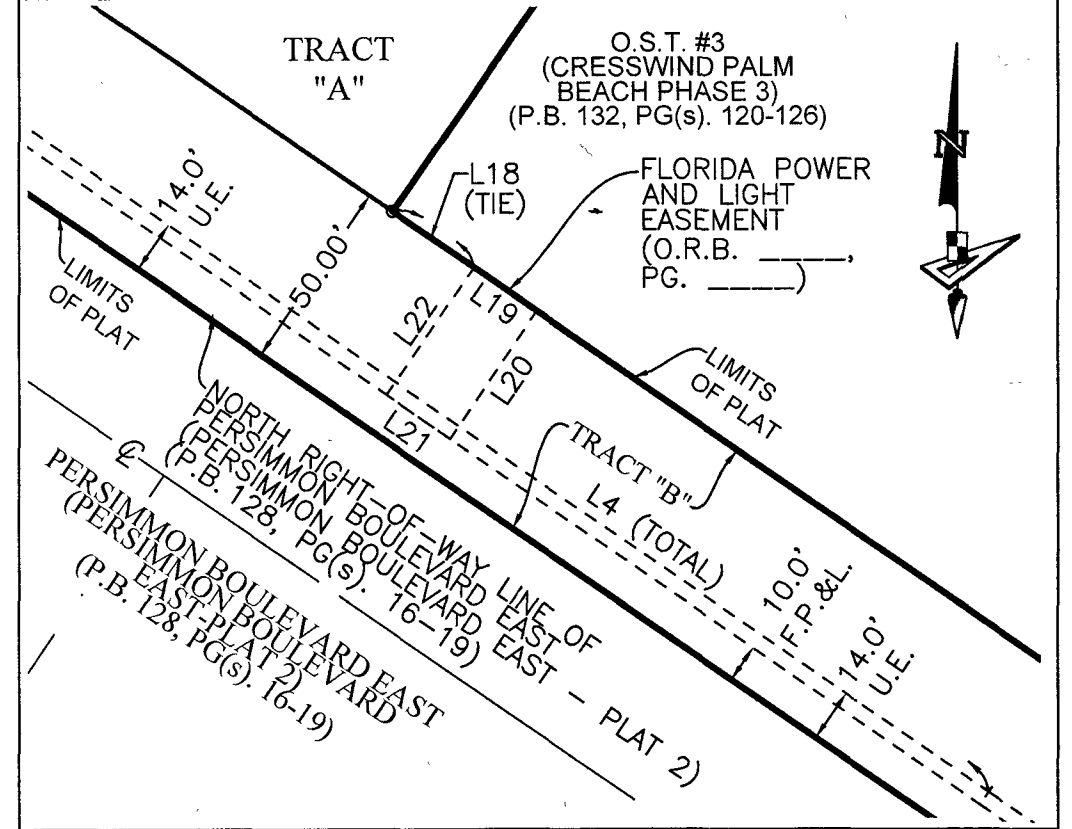
NOTICE:
 THIS PLAT, AS RECORDED IN ITS GRAPHIC FORM, IS THE OFFICIAL DEPICTION OF THE SUBDIVIDED LANDS DESCRIBED HEREIN AND WILL IN NO CIRCUMSTANCES BE SUPPLANTED IN AUTHORITY BY ANY OTHER GRAPHIC OR DIGITAL FORM OF THE PLAT. THERE MAY BE ADDITIONAL RESTRICTIONS THAT ARE NOT RECORDED ON THIS PLAT THAT MAY BE FOUND IN THE PUBLIC RECORDS OF THIS COUNTY.

NOTE: EASEMENTS, BUFFERS AND OTHER SUCH LABELS AND DIMENSIONS OF A PARALLEL NATURE AS SHOWN HEREON AND INDICATED TO THE NEAREST FOOT (IE: 5' UTILITY EASEMENT) ARE ASSUMED TO BE THE SAME DIMENSION EXTENDED TO THE NEAREST HUNDREDTH OF A FOOT WITH NO GREATER OR LESSER VALUE (IE: 5' = 5.00") (IE: 7.5' = 7.50")

DETAIL "C" (SCALE: 1"=50')

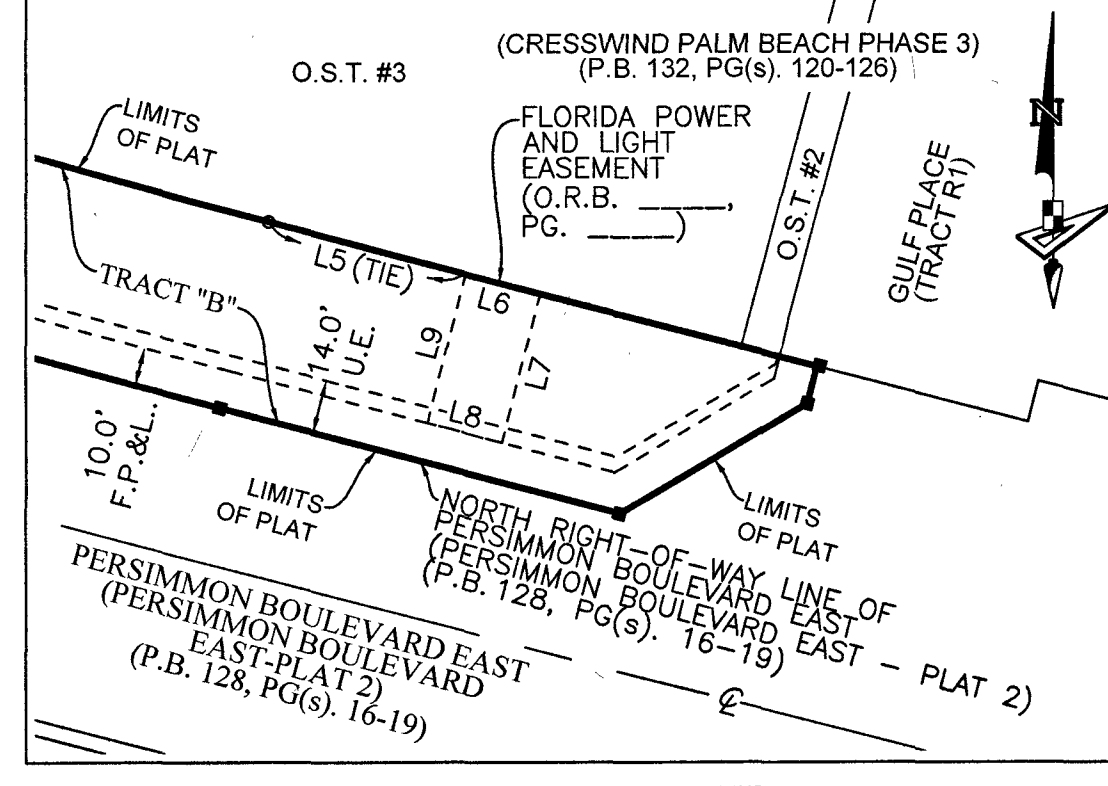


DETAIL "D" (SCALE: 1"=50')



| NO. | BEARING | LENGTH |
|-----|---------------|--------|
| L18 | S 55°21'38" E | 25.67' |
| L19 | S 55°21'38" E | 20.00' |
| L20 | S 34°38'22" W | 40.00' |
| L21 | S 55°21'38" W | 20.00' |
| L22 | N 34°38'22" E | 40.00' |

DETAIL "B" (SCALE: 1"=50')



| NO. | BEARING | LENGTH |
|-----|---------------|--------|
| L5 | N 75°14'29" W | 53.01' |
| L6 | S 75°14'49" E | 20.00' |
| L7 | N 14°25'13" E | 40.00' |
| L8 | S 75°14'29" E | 20.00' |
| L9 | S 14°25'13" W | 40.00' |

- LEGEND**
- P.B. ----- PLAT BOOK
 - D.B. ----- DEED BOOK
 - O.R./O.R.B. ----- OFFICIAL RECORDS BOOK
 - PG./PG(S) ----- PAGE(S)
 - O.S.T. ----- OPEN SPACE TRACT
 - P.B.C. ----- PALM BEACH COUNTY
 - R.P.B. ----- ROAD PLAT BOOK
 - NAD ----- NORTH AMERICAN DATUM
 - LB ----- LICENSED BUSINESS
 - R ----- RADIUS
 - L ----- ARC LENGTH
 - D ----- DELTA ANGLE
 - ⊕ ----- CENTERLINE
 - U.E. ----- UTILITY EASEMENT
 - F.P. & L. ----- FLORIDA POWER & LIGHT
 - R/W ----- RIGHT-OF-WAY
 - 12-43-40 ----- SECTION-TOWNSHIP-RANGE
 - W.M.T. ----- WATER MANAGEMENT TRACT
 - S.I.D. ----- SEMINOLE IMPROVEMENT DISTRICT
 - ----- FOUND 5/8" IRON ROD WITH CAP STAMPED "C&W PRM LB3591"
 - ⊙ ----- SECTION CORNER
 - ----- SET 4"x4" CONCRETE MONUMENT WITH 2" ALUMINUM DISK STAMPED "PRM LB 7768"
 - ----- FOUND PERMANENT REFERENCE MONUMENT

NOTE: EXISTING FLORIDA POWER AND LIGHT EASEMENT 10 FEET IN WIDTH NORTHEASTERLY AND PARALLEL WITH THE NORTHEASTERLY RIGHT-OF-WAY LINE OF PERSIMMON BOULEVARD EAST PER OFFICIAL RECORDS BOOK 30598, PAGE 79 (TYPICAL)